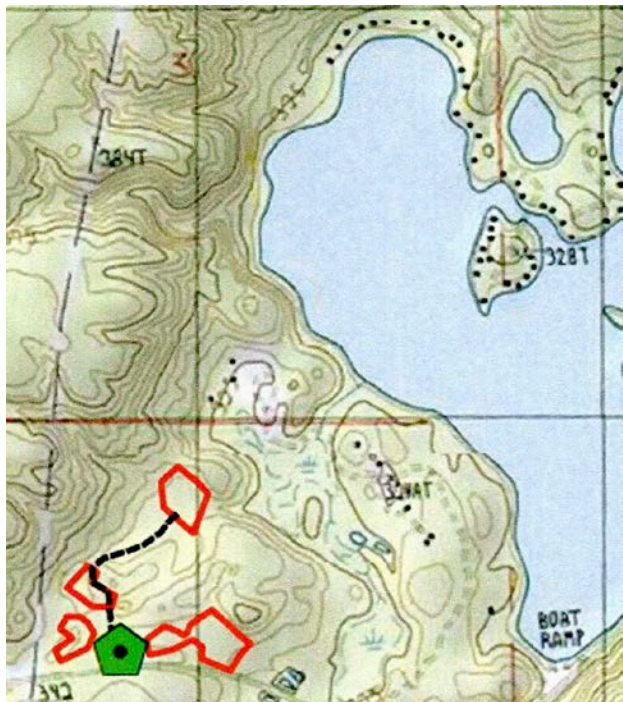


# Lake Louise Christian Community Board of Trustees Report and Cottager Update Spring, 2018

*John Marshall, President, Cottagers' Council*

The Lake Louise Christian Community (LLCC) Board of Trustees met via teleconference (because of the weather) on February 10, 2018 and at the Retreat Center at Lake Louise on April 20-21, 2018 for its winter board meetings. Here are the items that were discussed and some additional items that may be of interest to you as a Lake Louise cottager.

- 1) *This Winter's Forest Harvest*** – The logging activities, scheduled to be completed this spring before cottagers arrive, may be delayed until next year because of issues with the logging company that purchased the harvest. This harvest is composed of red pine trees from three locations at the east end of Lake Louise - two red pine stands on the east side of Magee Road across from the County Park and a small red pine stand located in the southern portion of the County Park property, and from four locations at the west end of the LLCC property near the gas pipeline. In addition, there is one red pine stand, located within Camp Kinawind, that will be included in this harvest. On the accompanying two maps below, the red areas represent the locations of the red pine stands that will be cut and the green areas represent the sites where logs will be stacked until they can be transported to the mill. No logging activities are permitted during the summer months at Lake Louise when cottagers and campers are present.



Five red pine stands at the west end of the lake



Three red pine stands at the east end of the lake

- 2) *Trees falling along Thumb Lake and Stafford Roads*** – This past year, there have been several instances where large, dead trees located on Lake Louise property have fallen onto Thumb Lake and Stafford Roads. As a result, the camp has surveyed the roadways that run through its property and has identified a significant number of trees that are dead and are leaning toward the roads. This spring, the camp staff will begin the process of removing those trees to ensure the safety of people using those roads.
- 3) *Installation of Geothermal heating and cooling systems in cottages*** – The LLCC Board of Trustees has added the installation of a geothermal heating and cooling system as an item that requires Board approval prior to installation. This is to ensure that the LLCC staff is aware of the contractor's plans for accessing the system's water source and for providing appropriate system drainage.

4) **Significant New Improvements at the Lake Louise Camp** – Many generous donations from cottagers, campers’ families, camp alumnae, camp leaders, deans and volunteers have supported four major building projects that are currently underway at the camp. **First**, several older cabins at the west end of the camp, in the Redmond Village, are currently being rehabilitated with new metal roofs and the partitioning of the interior to create separate living areas, including a living room with baseboard heating, a bedroom that can accommodate up to three individuals, a bathroom and a kitchenette area. These cabins will provide updated residences and a lounge for the staffs of the various camps throughout the summer and for full-time camp staff. **Second**, a new health center has been donated to the camp. It contains a large treatment area, an isolation room, a medication storage area, a bathroom and a separate living/bedroom with a private bathroom for the camp’s medical staff person. **Third**, with many donations to date, the Tennent Chapel is undergoing rehabilitation and has acquired a new metal roof and new indoor lighting. **Fourth**, one of our well-known cottagers has generously donated the relocation, rehabilitation and furnishing of one of the old camp cabins to create the Gitcha Ninj Nebish (the Odawa Indian name for Lake Louise) Nature Center. It is located near the waterfront east of the Strong Chapel and will provide a site for campers and others to learn about the nature that surrounds us at Lake Louise.

With these significant improvements and additional ones planned for the near future, Lake Louise is being transformed into a more unique and special place where campers’ lives are being changed, where retreat participants can interact while finding a respite from their busy lives and where cottagers can appreciate the uniqueness of this lake community, which is provided for us by the Lake Louise Christian Community.

5) **Cottage Sales Information** – There have been 12 cottages that have changed hands in the last 6 years. The **Petree** cottage #54 (the 5<sup>th</sup> cottage in on Morningside Drive) was recently been sold. It was purchased by Jon and Tamara Teppo, currently of Wilmette, Illinois. They have three children, ages 11, 13 & 16. They are looking forward to being part of the Lake Louise Community. The **Breining** cottage (#70) at 308 Delta Lane (1<sup>st</sup> cottage west of the Baptist camp) and the **Matson** cottage (#87) at 570 East Birch Circle in Cove Point are still for sale. If you know anyone who might be interested in a cottage on the lake, have them contact the Camp Office Staff and they can connect them with the appropriate realtor(s).

6) **“No Outlet” signs** – The Cottagers’ Council and the LLCC staff have completed the installation of NO OUTLET signs in three locations to help drivers who are not familiar with the roads around the lake to identify those roads that have no outlet. The first sign was installed at the bottom of Morning Side Drive in 2016. The second sign was installed last summer at the top of Stafford Lane and the third sign was recently installed at the entrance to Delta Platt (see photo). Hopefully, this will reduce the traffic looking for a shortcut to Thumb Lake Road via the northwest side of the lake.



**7) Plans for Milfoil Management this Summer** – Last year’s efforts of milfoil management included three phases. First, the cottagers utilized their pontoon boat, equipped with a GPS recording system, to locate the patches of milfoil present in the lake. Second, we contracted with Savin Lake Services to provide the necessary permits, chemical and spreading equipment, and we worked in tandem with them to provide a coordinated treatment of all of the identified milfoil patches. Third, the cottagers monitored the treated milfoil patches throughout the summer and provided a late August chemical treatment to the few milfoil patches that continued to appear somewhat healthy.

This plan appears to have been quite successful, and because we want to maintain control over the milfoil problem, we anticipate using the same approach for the next several summers. We will evaluate our success annually and keep you informed regarding the status of milfoil in the lake.

**8) Do you order things online from Amazon.com?** If you do, please do your shopping on **AmazonSmile**. AmazonSmile is a website operated by Amazon with the same products, prices, and shopping features as Amazon.com. The difference is that when you shop on **AmazonSmile**, the AmazonSmile Foundation will donate 0.5% of the purchase price of eligible products to the charitable organization of your choice. **How to do it** – It’s very simple...Go to smile.amazon.com, log onto your Amazon account, go to the upper left portion of the page and click on the place to designate Lake Louise Christian Community as your charity. That’s all you have to do. Then shop. Every time you sign onto smile.amazon.com and purchase something, you will be contributing to Lake Louise. Thank you.

**9) Schedule of 2018 Cottager Council Summer Activities -**

- Dumpsters will be available for cottage refuse - Saturday, June 23<sup>rd</sup> to Saturday, July 7<sup>th</sup>
- Cottagers Potluck & Cottagers’ Council Meeting – Dining Hall Saturday, June 23<sup>rd</sup> @ 6:00 p.m.
- Lake Louise Boat Parade - Starting in front of County Park Sunday, July 1<sup>st</sup> @ 8:00 p.m.
- Lake Louise Cottagers Pizza Party – County Park Pavilion Tuesday, July 10<sup>th</sup> @ 6:00 p.m.
- Cottagers’ Town Hall Meeting – Retreat Center Dining Hall Saturday, July 21<sup>st</sup> @ 10:00 a.m.
- Cottagers’ Council Mtg. & Ice Cream Social – Dining Hall Wednesday, August 22<sup>nd</sup> @ 7:00 p.m.
- LLCC - Boyne Valley Pantry Community Dinner–Dining Hall Date will soon be available on the LLCC website

**10) The 2018 Cottagers’ Directory** – The 2018 directories have been mailed out to all cottagers. Should you desire an extra directory, please contact Cheryl Millington, Lake Louise Financial Director & Office Manager by email at [lakelouise@lakelouisecommunity.org](mailto:lakelouise@lakelouisecommunity.org) or by telephone at (231) 549-2728.

**11) The Next Meeting of the Board of Trustees** – Friday, June 22, 2018 at the Retreat Center at Lake Louise.